

COMPLETE CONSTRUCTION SOLUTIONS AND INDUSTRIAL RACKS



02	<u>Introduction</u>
03	<u>Business Portfolio of AkijBashir Group</u>
04	<u>The ASML Journey</u>
06	<u>Steel Building Essentials</u>
07	<u>Our Capacity That Counts</u>
08	<u>ASML Reliability</u>
08	<u>Uniquely ASML</u>
09	<u>Standing Seam-Lock Roofing System</u>
10	<u>Klip-Lock Screwless Roofing System</u>
11	<u>Shot Blasting Technology</u>
12	<u>Parts of Precision</u>
13	<u>ASML Roof & Wall Panel</u>
14	<u>End-to-end Nationwide Steel Solutions</u>
15	<u>The ASML Promise</u>
16	<u>Scope of ASML</u>
17	<u>Successful Projects</u>
37	<u>Warehouse Racking Solutions</u>
38	<u>Perfect Rack with ASML Industrial Racks</u>
38	<u>Painted to Perfection</u>
39	<u>Range of Racks</u>
40	<u>Do More with ASML HDR</u>
41	<u>Our Racks in Action</u>
42	<u>Clientele of ASML</u>
44	<u>ISO Certificate</u>

INDEX

INTRODUCTION

AKIJBASHIR GROUP

Every great endeavor begins with a vision, an audacious dream that defies convention and propels us toward a brighter future. AkijBashir Group stands as a testament to the power of such dreams forged from the indomitable spirit of Sk. Akij Uddin, a visionary entrepreneur of his time.

Our journey began with humble origins but was built upon the unshakable pillars of ethics, integrity, and diversity. Sk. Akij Uddin's legacy continues to inspire us and AkijBashir Group has emerged as a dynamic force poised to redefine industry standards.

AkijBashir is a group that's built on a foundation of innovation and passion. With a deep sense of purpose and a commitment to excellence, AkijBashir Group is making a significant impact on the planet, one product at a time. It strives to be a brand that is always seeking new and better ways to do things, whether through its cutting-edge technology or innovative products. With its determined and dedicated team members, AkijBashir Group is committed to pushing boundaries and creating a better future.

BUSINESS PORTFOLIO OF

AKIJBASHIR GROUP



selections



Janata Jute Mills Ltd.



Sadat Jute Industries Ltd.



THE ASML JOURNEY

AkijBashir Group (ABG), a rapidly expanding conglomerate with diversified business interests, faced a significant challenge for not receiving materials in time from the external suppliers of Prefabricated Steel Buildings with an annual need of approximately 10,000-12,000 MT. To meet its growing demand for high-quality steel buildings on time, ABG launched Akij Steel Mills Limited (ASML) in 2016. Specializing in Prefabricated/Pre-Engineered Steel Buildings and Storage Solutions, ASML quickly became a leading manufacturer in Bangladesh.

ASML operates through two dynamic divisions: Prefabricated steel structures and heavy-duty racks.

Our prefabricated steel structures division builds durable, customizable steel buildings tailored for industrial facilities, warehouses, sheds, and commercial spaces by offering

massive construction, cost efficiency, and flexible design options, all while supporting sustainability and a greener future.

In our Warehouse Solutions division, we deliver advanced storage systems that enhance space utilization, streamline inventory management, and improve warehouse organization.

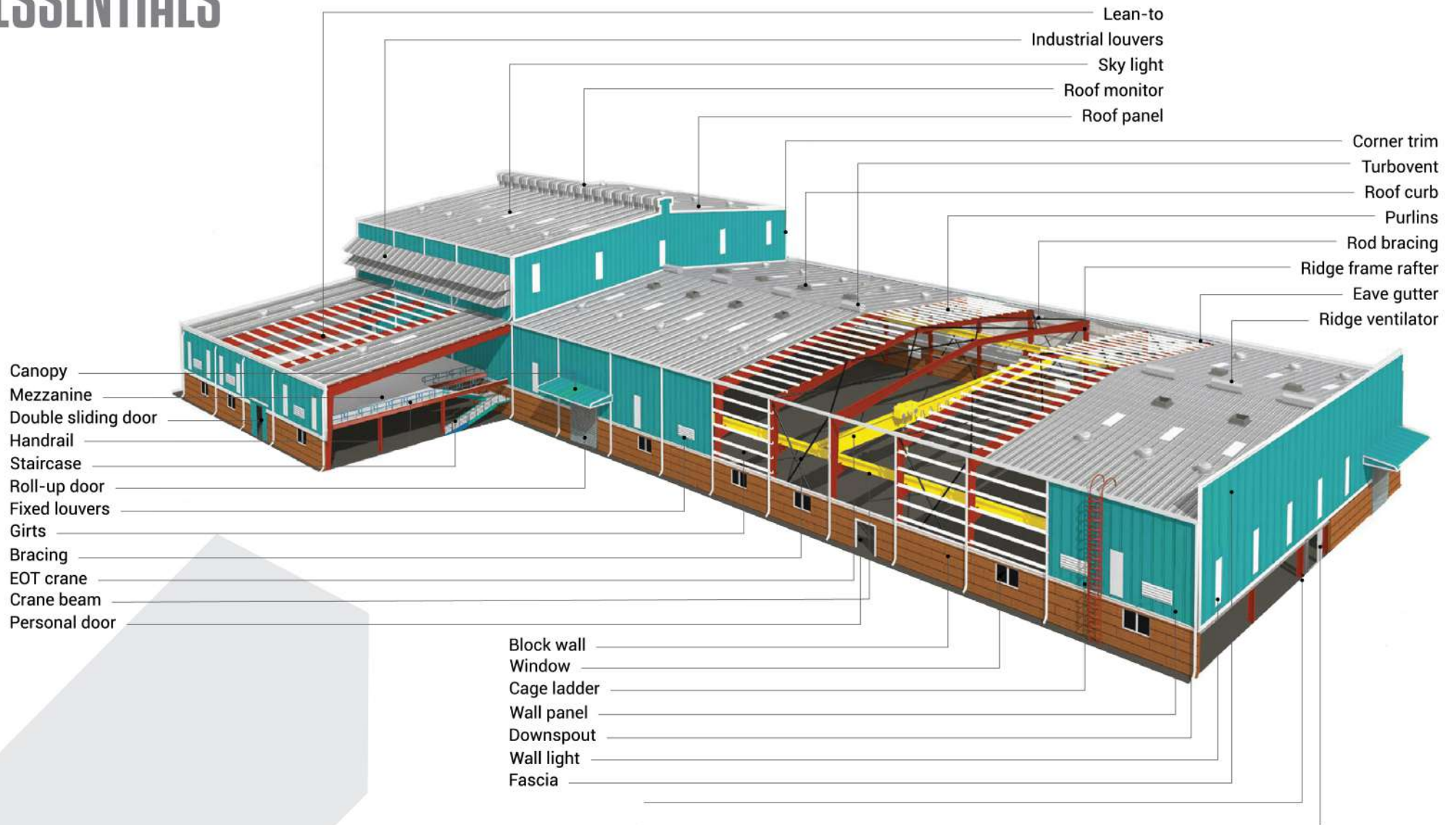
At ASML, we are committed to customer satisfaction, offering expert support from design through after-sales service and on-time delivery. Discover how ASML can elevate your steel construction and storage facilities.

Contact us today to build a stronger future together.



STEEL BUILDING

ESSENTIALS



OUR CAPACITY THAT COUNTS

BUILT-UP SECTION	: 15,000 tons/annum
COLD ROLL SECTION	: 5,000 tons/annum
PROFILE SHEETING	: 5,000 tons/annum
HEAVY-DUTY RACK (HDR)	: 2,000 tons/annum

27,000 TONS/ANNUM

ASML RELIABILITY

SHAPING A SUSTAINABLE FUTURE WITH PREFAB BUILDINGS

Our Prefabricated Steel Structures division focuses on creating customizable steel buildings for industrial, warehouse, shed and commercial applications- offering cost efficiency, flexible design options and quick construction. Our structures are well-suited for projects of all sizes. We also emphasize sustainability to support an environment friendly future.



UNIQUELY ASML

- 350+ top notch projects delivered
- 10+ years' experience
- 70+ clients
- 10+ mega projects (minimum size 2500 MT)
- On-time delivery of a single mega project (10,000 MT)
- Total 60,000 MT tonnage built (Steel Building & HDR)
- Total 12 million sft. built
- Complete construction solutions for prefabricated steel structures with mezzanine and crane system
- Shot Blasting Facility
- Shot blasting machine for surface preparation (SA 2.5) for special painting (Epoxy & Fire)
- Slitting Facility (up to 6mm)
- Environment compliant leak-proof roofing system for solar panel (screw free)
- Well equipped with most advanced CNC Fiber Laser cutting machine (32 mm thick) and Shear cutting machine (02 nos: 12 mm & 30 mm thick)
- Slitter machine (up to 6 mm thick)
- Submerged Auto Arc (SAW) Welding Machine
- Racking solution facility
- ISO Certified 9001, 14001, 45001

STANDING SEAM-LOCK ROOFING SYSTEM

WITH LIFTING DEVICE

- Screwless & Leak-Proof – Designed with concealed fasteners, eliminating visible screws for a seamless look and ensuring superior waterproofing.
- High Wind & Weather Resistance – Perfect for regions prone to heavy rain and storms.
- Sleek Modern Aesthetics – Clean lines enhance the architectural appeal of any structure.
- Durability & Low Maintenance – Crafted from high-quality coated steel, offering long service life with minimal upkeep.
- Solar-Friendly – Easily integrates with solar panel installations for eco-friendly energy solutions.
- Standing Seam Lock Profile Machine with automatic lifting device up to 60'-0" height on site.
- Standing Seam lock (Max.) length – Any length, even unlimited lengths are possible on-site.



KLIP-LOCK SCREWLESS ROOFING SYSTEM OF ASML

- Innovative Clip-Fixed Design Screwless – Panels are locked onto concealed clips, allowing natural thermal expansion without compromising performance.
- Fast & Secure Installation – Reduces labor time while ensuring a tight, secure fit.
- Superior Weatherproofing – Prevents water leakage and improves building safety.
- Cost-Effective & Efficient – Provides long-term savings through minimal maintenance and extended durability.
- We've implemented up to 62.5m, however longer, even unlimited lengths can be possible; sheets are produced directly on-site.



SHOT BLASTING

TECHNOLOGY OF ASML

This Shot Blast SA2.5 removes all rust, old coatings, and contaminants. The result is a clean, roughened surface profile that provides excellent adhesion for primers, paints, and protective coatings, specially epoxy paints.

Key Benefits of SA 2.5 Shot Blasting:

- Ensures superior coating adhesion and longevity
- Reduces risk of corrosion and premature coating failure
- Creates uniform roughness for consistent paint application
- Meets international quality and durability standards



PARTS OF PRECISION

ASML Purlin, Girt and Eave struts shall be cold formed from steel which has minimum yield strength of SS340 and will conform to the physical specifications of ASTM A-653 (Grade 50) or equivalent with Z 180 to 275 g/m².

1. **Purlins and Girts** shall be roll formed Z sections, 120-250 mm deep with 50-100 mm flanges. Each flange shall have a 16 mm stiffening lip formed at 45 degrees to the flange with a thickness of 1.5 to 2.5 mm.
2. **C-channels** are 100-300 mm deep formed with 50-100 mm flanges with a maximum thickness of 10 mm.

All other miscellaneous secondary members shall have a minimum yield strength of 240 MPa.





ASML ROOF & WALL PANEL

GLOBAL STANDARD, SUPERIOR PERFORMANCE

Roof/Wall panels are manufactured out of high strength steel grade with minimum tensile strength of 300/550 MPa. The steel base is coated with Zinc-Aluminum alloy with minimum AZ150/200 (150/200 g/m² with minimum coating mass) as per ASTM A792.

Color coated Galvalume conforming to ASTM A792 specification has specifically formulated a paint system for external roofing and wall cladding application to give aesthetical appearance for long-lasting color for much longer time than any other conventional paint system.



END-TO-END NATIONWIDE STEEL SOLUTIONS

At ASML, we pride ourselves on providing a comprehensive suite of products and services to meet the diverse needs of our clients. Our offerings include:

- Pre-engineered steel building solutions
- Complete design & detailing as per latest Code (BNBC 2020, ASCE, AISC, IBC, MBMA, AISI, AIST, BS/Eurocode) and compliance of RSC
- Stand Seam & Klip Lock Roofing System
- Primary members, secondary members
- Accessories, cladding systems & mezzanine
- Structural system & crane systems
- Warehouse racking systems
- Erection/installation
- After-sales services
- Standing Seam/ Lock Seam & Klip Lock (Screwless) Roofing System for solar frame with special knob on Lock Seam
- RSC, Accord & Alliance compliant Building: 10+
- Warranty for Roof Sheet: 20 years
- Production Capacity: 25,000 MT/year
- Handover before deadline: 20+
- Certifications: i.) ISO 9001:2015, ISO 14001:2015 & ISO 45001:2018
- Building height more than 60ft-project done: 65





THE ASML PROMISE

TIMELY DELIVERY, TRUSTED COMMITMENT & DEDICATED SERVICE

- Premium quality products with committed delivery
- Advanced roofing system (screwless roofing system)
- Exceptional design capability (multistoried, industrial, and mill building structures with clear spans up to 90 meters without any interior columns, offering unmatched flexibility)
- Cost-effective and customized solutions
- Advanced manufacturing facilities
- Powering the future: 45 MW Solar Capacity across 3,000,000 sft. of roof by ASML
- Solar area: 31,00,000 sft. Solar Compatible Roofing Panel (screwless roof) done
- Solar capacity: 60 MW



- 
- Factories, industrial sheds, and textile mills
 - Warehouse, workshops, dry dock, and shipyards
 - Office, school, hospital, site office, shelter, labor camp, portable cabin, and cafeteria
 - Multistoried commercial buildings, shopping mall, and showroom
 - Distribution center and convention center
 - Cold storage, feed mill, flour mill, poultry & dairy farmhouse, and tannery
 - Railway station and car parking
 - Steel/cement/power/washing/glass/ceramics/jute/pharmaceuticals/leather/footwear/fertilizer and petrochemical plant
 - Oil, gas, and LNG stations
 - Aircraft hanger, airport terminals, jetty, and metro station
 - Sports arena, stadium, and other recreational facilities
 - Bridges— pedestrian, railway, and flyover

SCOPE OF ASML IN PREFAB **STEEL STRUCTURES**



SUCCESSFUL PROJECTS

SUCCESSFUL PROJECTS

ATC Tower (Cabin Roof) Hazrat Shahjalal Int. Airport



Project details:

This unique structure has been designed by globally renowned HOK, Hong Kong (Architectural) and Thales, France. Aeroness International Limited, a concern of Expo Group in Bangladesh, approached Akij Steel Mills Limited after an extensive search for a capable prefab steel structure. They required expertise for constructing an ATC tower for overcoming significant challenges, such as fabricating and erecting the structure at a height of 150 feet, with surface diameter of 65 feet ensuring beam alignment with a crane positioned far below on the ground. The project also involved managing complex scheduling, including coordinating with VIP movements and occasionally halting works due to airline operations. Additionally, welding the beams at 150 feet high under high wind pressure further added to the complexity of the task. AKIJ Steel Mills Limited (ASML) completed the project successfully by overcoming the challenges and satisfying the client.

SUCCESSFUL PROJECTS

Bangladesh Honda Pvt. Ltd
Abdul Monem Economic Zone, Munshiganj.



Project details:

Akij Steel Mills Limited is proud to complete Honda Turnkey project successfully, two weeks ahead of the deadline. The works includes Civil, Steel structure, Electrical and Fire safety.

SUCCESSFUL PROJECTS

Bay Footwear Limited
Konabari, Gazipur.



Project details:

AKIJ Steel Mills Limited successfully completed the 1,200 MT project within three months, including the erection of structures reaching 70 feet in height. The project also involved integration with an existing building and numerous RCC-to-steel connections.

SUCCESSFUL PROJECTS

Shanta
I Block, Bashundhara, Dhaka



Project details:

This exhibition project includes both mezzanine and shed portions. We successfully handed it over **18 days ahead of stipulated schedule**. Although it's an exhibition centre, we ensured strict quality control of materials and services throughout the project.

SUCCESSFUL PROJECTS

Akij Polymer Industries Ltd.
Ghior, Manikgan



Project details:

Akij Polymer Industries Limited successfully installed a KLIP-LOCK roofing system with solar panel capacity of 1.7 MW, covering a roof area of 78,000 sft. The project was completed and handed over in 2023.

SUCCESSFUL PROJECTS

Ananta Huaxiang Ltd.
AHL-4 Warehouse, Adamjee EPZ, Narayanganj



Project details:

The shed has been erected above a 3 storied RCC building. Due to lack of space near the project site, the structure was erected without the help of a crane.

SUCCESSFUL PROJECTS

Akij Glass Industries Ltd.
Factory Building, Habiganj, Sylhet



Project details:

Akij Glass mega factory comprises 20 versatile types of steel buildings weighing approx 10,000 MT in total, manufactured and erected within two years. The project included a 450,000 sft. multi gable warehouse with large roof monitors measuring 4.5m height and 10m in width. The facility also features a solar power capacity of 8.4 MW on KLIP-LOCK roofing.

SUCCESSFUL PROJECTS

Chimbuk Ceramics Ltd.
Production Factory Shed, Bhaluka, Mymensingh



Project details:

Multi gable structure with different heights in a small space completed within a short time.

SUCCESSFUL PROJECTS

FCI, Young International Weaving (BD) Ltd.
CEPZ, South Haliashahar, Chattogram



Project details:

It's a UK based textile at EPZ in Bangladesh. The FCI (Young International Water Treatment Plant) project was done along with civil structure work. The construction was done before 15 days of the timeline.

SUCCESSFUL PROJECTS

Akij Ceramics Ltd, (Body Preparation Shed)
Trishal, Mymensingh



Project details:

The body preparation for Akij Ceramic, covering an area of 26,340 sft. with a maximum height of 20m, was completed in 2021.

SUCCESSFUL PROJECTS

Akij Pipes
Raymoni, Trishal, Mymensingh



Project details:

A 3,35,000 sft. area of structure roofing with a clear height of 14m was completed in 2018.

SUCCESSFUL PROJECTS

Saiham Denims Ltd.
Production, Habiganj, Sylhet



Project details:

The construction of a big spinning mill with two warehouses and a chiller shed, covering a total area of 3,25,000 SFT was successfully completed within five months, despite the challenges posed by heavy rainfall in Habiganj. Besides, the structure contains a solar compliant roofing system (KLIP-LOCK Roofing of ASML).

SUCCESSFUL PROJECTS

Essential Flour Mills Ltd.
Bagging building, Bandar, Narayanganj



Project details:

It is a multistoried building with a height of 35m. The building is only 13.5m in width with full height wall sheeting.

SUCCESSFUL PROJECTS

Essential Feed Mill Bandar, Narayanganj



Hip roof

Project details:

Shed building with an area of 3,00,000 sft. including mezzanine. Total volume of this structure is 3500 MT. The hip roof is a key architectural feature of this structure.

SUCCESSFUL PROJECTS

Janata Jute Mills Ltd.
Factory Building, Faridpur



Project details:

A solar compliant structure with a clear height of 7m, has been successfully completed within only 4 months of time for an area measuring 2,55,000 sft.

SUCCESSFUL

PROJECTS

Akij Ceramics Ltd. (Unit 5)
Factory Building, Trishal, Mymensingh



Project details:

The existing building of 42,000 sft. area, height was lifted (6m to 8m) with modern architectural view, completed in 2020.

SUCCESSFUL PROJECTS

Akij Bathware
Trishal, Mymensingh



Project details:

Contains a heavy loaded mezzanine with an area of 60,000 sft. and clear height of 9m, completed in 2021.

SUCCESSFUL PROJECTS

Shasha Denims Ltd.
Main Production Shed, DEPZ, Savar, Dhaka



Project details:

KLIP-LOCK roofing system with a clear span of 45m, a very challenging construction due to limited space at site, completed in 2023 by ASML.

SUCCESSFUL PROJECTS

Dal Mill
Bandar, Narayanganj



Project details:

The 6 storied structure was manufactured and erected by ASML. Its height is 28m, total weight 2,500 MT. ASML has used heavy crane (200 MT capacity) for its erection.

MAKE THE MOST OF YOUR SPACE

WAREHOUSE

RACKING SOLUTIONS

OF ASML

ASML expertise also lies in designing, manufacturing, and selling racks that not only optimize space utilization but also provide superior quality and durability.

Our racks are meticulously designed to take full advantage of vertical space in industrial storage areas. Built with robust, long-lasting structures, they ensure efficient storage and easy retrieval of goods, making them the perfect solution for any industrial setting.





ADVANCED PAINTED TO PERFECTION OF RACKS

Our racking systems offer top-quality paint finish using the new pre-phosphate technology and phosphate drying ovens, resulting in a durable RAL powder coating. Our advanced powder-coating line ensures a glossy, hard finish that is both tough and visually appealing.

PERFECT RACK

WITH ASML INDUSTRIAL RACKS

- Support initial layout and drawing services with RSC, BNBC and NFPA guidelines if needed.
- We offer installation across Bangladesh.
- Short lead times to ensure your project stays on track.
- We deliver at no cost to your location.
- Customizable layouts to fit your unique needs with superior durability and finish.
- Ongoing support even after purchase.



RANGE OF RACKS



Selective Rack



Shelving Rack



Double Deep Rack



Cantilever Rack



Drive-in Rack



Fabric Relax Rack



Mezzanine Rack



Slotted Angle Rack

DO MORE WITH ASML HDR



MS Trolley



Superstore Solution



Almirah



File Cabinet



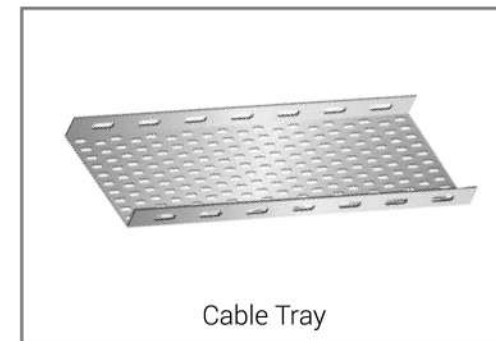
Moveable Stair



Metal Pallet



Personal Locker



Cable Tray

OUR RACKS IN ACTION



ACI



Check Point Systems (BD) Ltd.



UniMed UniHealth Pharmaceuticals Ltd.



Norp Knit Industries Ltd.



Tarasima Apparels Limited

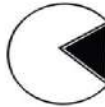
CLIENTELE OF ASML



CLIENTELE OF ASML



ROTEX
Bangladesh Ltd.



BITOPI GROUP



M&U



FairElectronics



RESAS
Chemie

DataFort
Innovation · Technology · Solution



AKIJ WELLNESS



AKIJ TEXTILE MILLS LTD.



NAZ
BANGLADESH



BUREAU
VERITAS

Bureau Veritas Certification

AKIJ STEEL MILLS LIMITED



TORA, GHIOR, MANIKGANJ-1840, BANGLADESH

Bureau Veritas Certification Holding SAS – UK Branch certifies that the Management System of the above organisation has been audited and found to be in accordance with the requirements of the Management System Standards detailed below.

Standards

**ISO 9001:2015, ISO 14001:2015 &
ISO 45001:2018**

Scope of certification

**DESIGN, ENGINEERING, SALES & MANUFACTURING OF PRE-ENGINEERED
STEEL STRUCTURE BUILDING & INDUSTRIAL STEEL RACK**

Original cycle start date: **15 August 2025**
Expiry date of previous cycle: **Not Applicable**
Certification Audit date: **07 July 2025**
Certification cycle start date: **15 August 2025**

Subject to the continued satisfactory operation of the organisation's Management System, this certificate is valid until: **14 August 2028**

Certificate No. **IND.25.916/IM/U** Version: 1 Issue date: **15 August 2025**

Signed on behalf of BVCH SAS UK Branch
Dr. JN MANIAN
Director – CERTIFICATION, South Asia
Commodities, Industry & Facilities Division



Certification body address: 5th Floor, 100 Lower Thames Street, London, EC3R 6DL, United Kingdom.

Local office: Bureau Veritas (Bangladesh) Pvt. Ltd
Symphony (5th Floor), Plot- SE(F)9, Road-142
South Avenue, Gulshan-1, Dhaka-1212, Bangladesh.

Further clarifications regarding the scope of this certificate and the applicability of the management system requirements may be obtained by consulting the organisation.
To check this certificate validity please call + 88 (02) 8836765. OR E-mail: cert.india@bureauveritas.com



9001



14001



45001





Corporate Address:

Simpletree Lighthouse, Plot 53, Road 21, Block-B,
Kemal Ataturk Avenue, Banani, Dhaka 1213, Bangladesh

Call: +8801911392920, +8801677190134

Plant Address:

Tora, Ghior, Manikganj (Near Tora Bridge)

E-mail: metaltalks@akijsteel.com

Website: www.akijsteel.com